



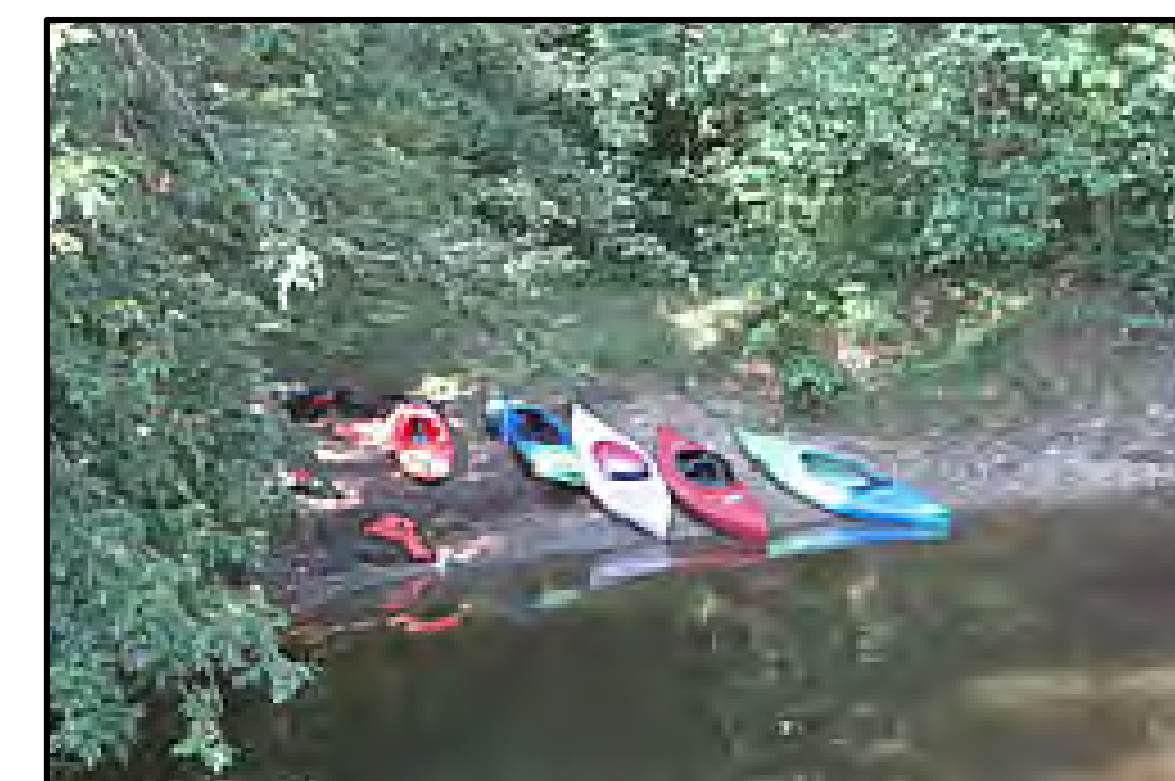
TWO RIVERS BIKE TRAIL CONNECTION



NATIVE AMERICAN INTERPRETATION



VISITORS CENTER



BOAT LAUNCH (NON-MOTORIZED)



POLLINATOR GARDEN TRAIL



VIEWING POINT



"RAIN GARDEN" BIOSWALE



UPLAND - RIPARIAN CORRIDOR TRAIL



SEASONAL WETLANDS



UPLAND - RIPARIAN HABITAT



PICNIC FACILITIES



CREATIVE / NATURAL PLAY AREA



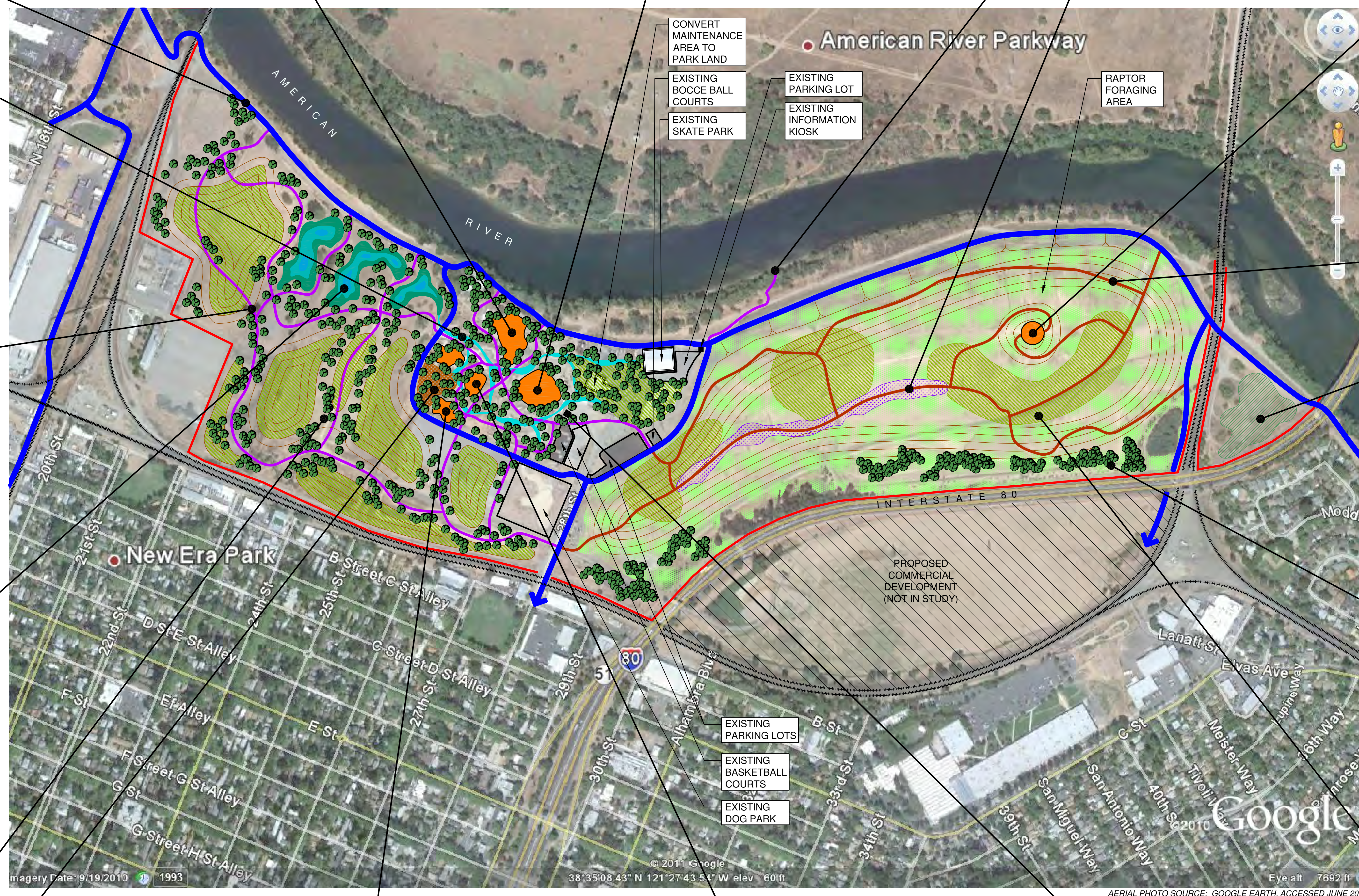
EDUCATIONAL AMPHITHEATER WITH CAMPFIRE PIT



RESTROOM FACILITIES



GRASSLAND HABITAT ENHANCEMENT



PRELIMINARY PROGRAM

THEMES

1. NATURALISTIC - ECOSYSTEM RESTORATION
2. PREHISTORIC - NATIVE AMERICAN
3. HISTORIC - JOHN SUTTER

NATURAL AREAS

- RIPARIAN CORRIDOR RESTORATION WITH SEASONAL WETLANDS, NATIVE PLANTINGS, AND COARSE WOODY DEBRIS
- ON-SITE ELDERBERRY (VELB) MITIGATION
- OPEN SPACE WITH NATIVE GRASS RESTORATION, WILDLIFE VIEWING, AND FORAGING HABITAT WITH WILDLIFE ENHANCEMENTS
- PERENNIAL PLANTING AND SOME WOODY SHRUBS AT LANDFILL (3- TO 18- FEET DEEP)
- NATIVE PLANTINGS TO SCREEN INTERSTATE 80 AND RAILROAD TRACKS
- POCKET PLANTINGS OF TREES
- NEST BOXES (E.G., BARN OWL, BATS)
- "RAIN GARDENS", TO CATCH RUN-OFF FROM HARDSCAPE AREAS

TRAILS

- NATIVE POLLINATOR GARDEN TRAIL (E.G., HUMMINGBIRDS, BEES)
- SELF-GUIDED NATURE TRAILS FOR WILDLIFE OBSERVATION AND RELAXING WALKS
- VIEW LOOP TRAIL
- RIPARIAN LOOP TRAIL, WITH ELDERBERRY PLANTINGS (FOR VELB), AND CONNECTION TO RIVER
- PARKING AND RIVER ACCESS FOR BOAT LAUNCHING (HAND CARRIED CRAFT ONLY)
- ACCESS TO THE AMERICAN RIVER BIKE TRAIL

AMENITIES

- SMALL VISITORS CENTER (WITH AMPHITHEATER, CAMPFIRE PIT, SMALL SHADE STRUCTURE, PICNIC BENCHES)
- NATIVE AMERICAN HORTICULTURAL PLANTINGS AND INTERPRETATION
- CREATIVE PLAY AREAS - NATURAL PLAYGROUNDS (E.G., MOUNDS, BOULDERS)
- PICNICKING - SITES WITH TABLES UNDER THE SHADE OF OAK TREES AND NEAR THE RIVER
- RESTROOMS
- SHADE STRUCTURES
- BENCHES AND REFLECTIVE SITTING AREAS
- ENHANCE SKATE PARK AREA
- ENHANCE DOG PARK AREA

NATIVE PLANTS

- TREES**
- ACER NEGUNDO / BOX ELDER
 - FRAXINUS LATIFOLIA / OREGON ASH
 - QUERCUS WISLIZENII / INTERIOR LIVE OAK
 - QUERCUS LOBATA / VALLEY OAK
- SHRUBS**
- ROSA CALIFORNICA / CALIFORNIA WILD ROSE
 - RUBUS URSINUS / CALIFORNIA BLACKBERRY
 - SAMBUCUS MEXICANA / ELDERBERRY
- GRASSES / WILDFLOWERS**
- BROMUS CARINATUS / CALIFORNIA BROME
 - CAREX BARBARAE / SANTA BARBARA SEDGE
 - CLARKIA SPECIES / CLARKIA
 - ESCHSCHOLZIA CALIFORNICA / CALIFORNIA POPPY
 - HORDEUM BRACHYANTHERUM SPP. CALIFORNICUM / CALIFORNIA MEADOW BARLEY
 - LEYMUS TRITICOIDES / CREEPING WILDRYE
 - LUPINUS SPECIES / LUPINE

LEGEND

- GRASSLAND - WILDLIFE HABITAT ENHANCEMENT
- UPLAND - RIPARIAN NATIVE HABITAT
- BIOSWALE
- CLASS 1 BIKE TRAIL
- FOOT TRAIL - PHASE 1
- FOOT TRAIL - FUTURE PHASE
- PROJECT LIMIT
- EXISTING RAILROAD TRACKS
- EXISTING GRASSLANDS

RESTORATION AND RECREATION PRELIMINARY CONCEPTS

SUTTER'S LANDING PARK - SACRAMENTO, CA

JULY 29, 2011

